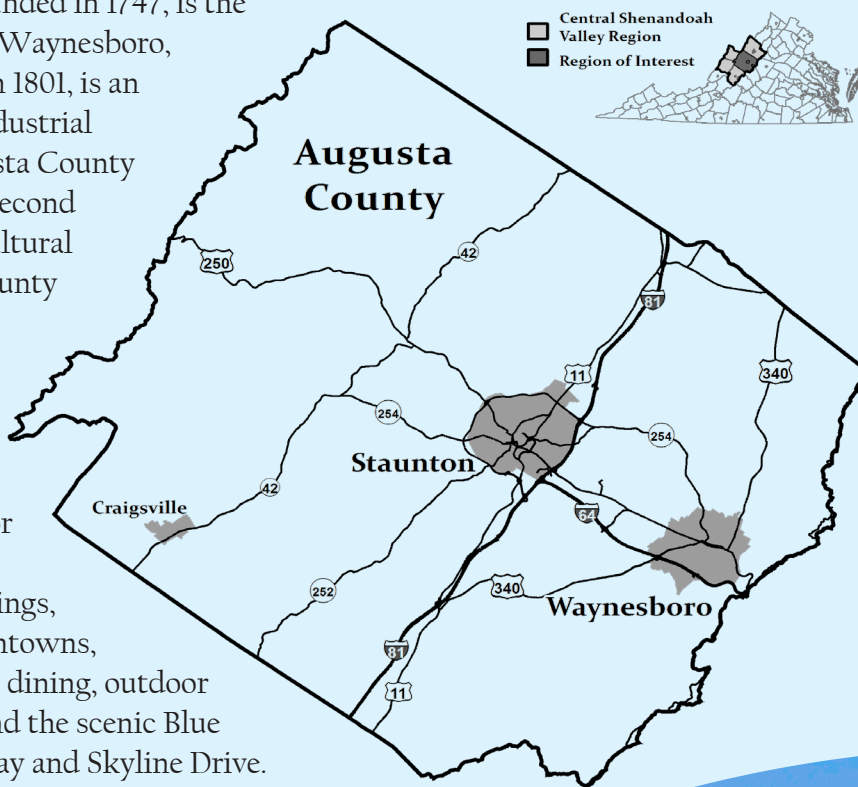


The Staunton-Augusta-Waynesboro Metropolitan Statistical Area, home to over 126,000 people, is located in the heart of the Shenandoah Valley. Staunton and Waynesboro are independent cities within Augusta County.

Staunton, founded in 1747, is the County seat. Waynesboro, established in 1801, is an important industrial center. Augusta County is Virginia's second largest agricultural producing county and has one incorporated town, Craigsville. The area is recognized for its arts and cultural offerings, historic downtowns, farm-to-table dining, outdoor recreation, and the scenic Blue Ridge Parkway and Skyline Drive.



Recreation:

Blue Ridge Parkway, George Washington and Jefferson National Forests, Skyline Drive, Shenandoah National Park, Appalachian Trail, Natural Chimneys Park, South River Greenway, Grand Caverns, and the Blue Ridge Tunnel.

Attractions:

Frontier Culture Museum of Virginia, Woodrow Wilson Presidential Library and Museum, American Shakespeare Center, Heifetz Music Institute, Shenandoah Valley Art Center, R.R. Smith Center for History and Art, Beverley Street Studio School, ShenanArts, Waynesboro Players, Oak Grove Theater, Wayne Theatre, Gypsy Hill Park, and the Russell Museum.

2023 Facts & Figures

Staunton - Augusta County - Waynesboro



Jobs People Region

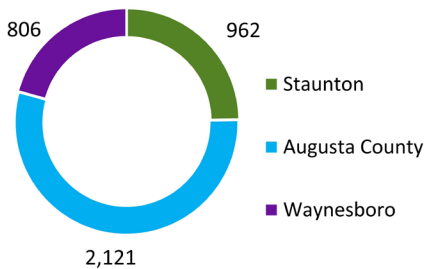
Median Household Income, 2022

Staunton	\$59,731
Augusta County	\$76,124
Waynesboro	\$52,519

Top 3 Employment Sectors

- Health Care & Social Assistance
- Manufacturing
- Retail Trade

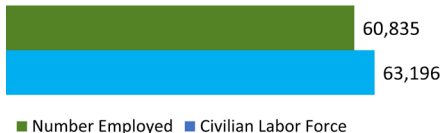
Number of Business Establishments: All Industries, 2022



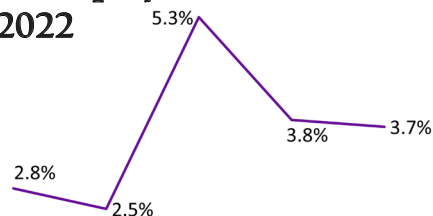
Higher Education

- Mary Baldwin University, including Murphy Deming College of Health Sciences
- Blue Ridge Community College

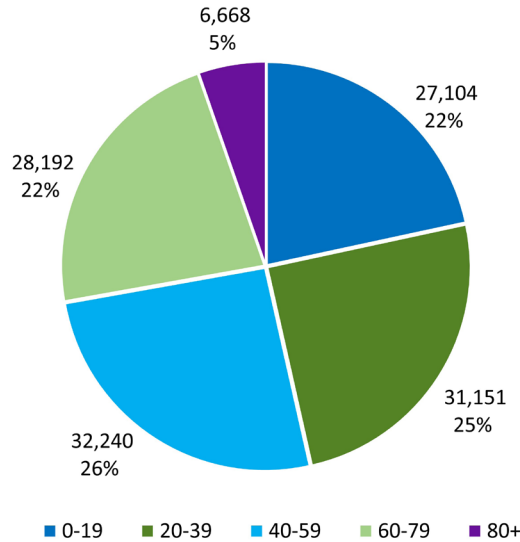
Labor Force, 2022



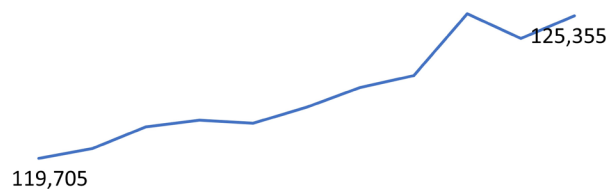
Unemployment Rate, 2018-2022



Age of Population, 2022



Population Growth, 2012-2022



Highest Level Education Attainment, 2022

Locality	High School	Some College/ Associate's	Bachelor's or Higher
Staunton	30.5%	28.5%	33.6%
Augusta County	40.3%	26.3%	23.3%
Waynesboro	34.9%	26.1%	27.2%

Public Schools, 2022-2023

K-12 Student Enrollment	15,194
Total Graduates & Completers	1,170
Percent Continuing Education	61.3%

Median Home Value, 2022

Staunton	\$219,500
Augusta County	\$267,100
Waynesboro	\$226,700

Total Housing Units, 2022

55,256

Number of Households, 2022

50,551

Transportation

- Road: Interstates 81 and 64
- Rail: CSX, Norfolk Southern, Shenandoah Valley Railroad, and Amtrak
- Air: Shenandoah Valley Regional Airport and Eagle's Nest Airport
- Port: Virginia Inland Port (85 miles north)

Augusta Health provides healthcare services

800 miles of River
45 miles of Interstate
1,729 Farms

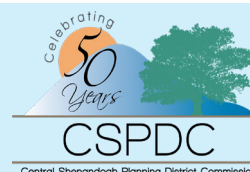
Local Government

www.ci.staunton.va.us

www.co.augusta.va.us

www.waynesboro.va.us

Central Shenandoah Planning District Commission
www.cspdc.org
(540) 885-5174
Staunton VA 24401



Data Sources:
Weldon Cooper Center, United States Bureau of Labor Statistics, United States Census Bureau, United States Department of Agriculture, Virginia Department of Education, & Virginia Employment Commission.