

---

## 7,200 SF PROFESSIONAL OFFICE SPACE AVAILABLE

51 Ivy Ridge Lane, Fishersville, VA 22939

---

### Executive Summary



### PROPERTY OVERVIEW

This Professional office space includes the entire second floor space accessed by elevator and stairs with great local proximity and ample parking. This is a prime location for Augusta County's core business and services region of Staunton, Fishersville & Waynesboro on the intersection of I-81 & I-64. The 7,200sf is comprised of offices, conference rooms, a lobby area and breakrooms. It has a variety of spaces to serve your office team's needs.



---

## 7,200 SF PROFESSIONAL OFFICE SPACE AVAILABLE

51 Ivy Ridge Lane, Fishersville, VA 22939

---

### Additional Photos



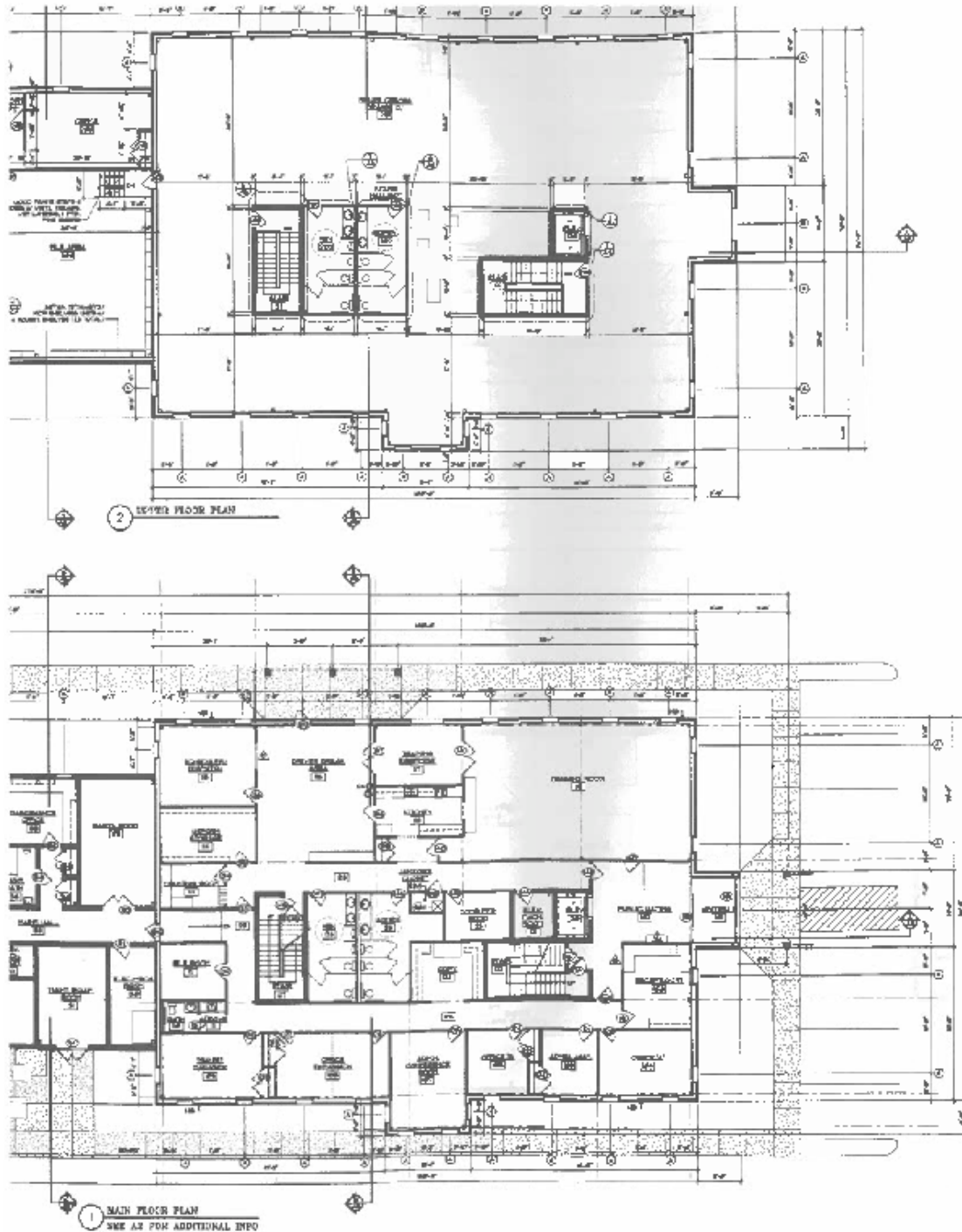
---

## 7,200 SF PROFESSIONAL OFFICE SPACE AVAILABLE

51 Ivy Ridge Lane, Fishersville, VA 22939

---

### Floor Plan





---

## 7,200 SF PROFESSIONAL OFFICE SPACE AVAILABLE

51 Ivy Ridge Lane, Fishersville, VA 22939

---

Minutes from I64/I81 Interchange

