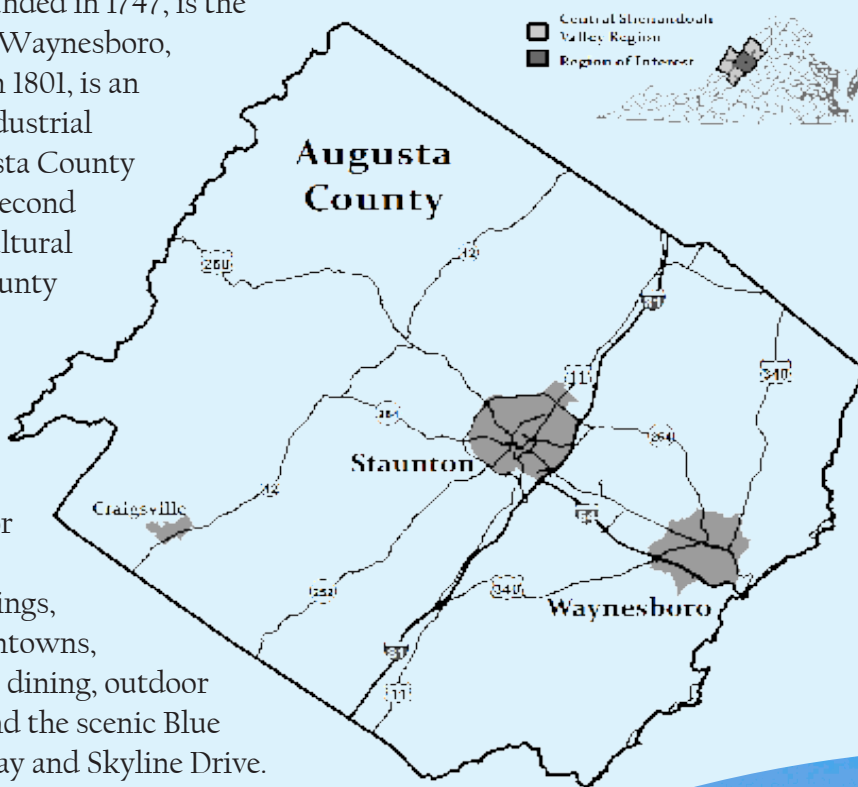


The Staunton-Augusta-Waynesboro Metropolitan Statistical Area, home to over 125,000 people, is located in the heart of the Shenandoah Valley. Staunton and Waynesboro are independent cities within Augusta County.

Staunton, founded in 1747, is the County seat. Waynesboro, established in 1801, is an important industrial center. Augusta County is Virginia's second largest agricultural producing county and has one incorporated town, Craigsville. The area is recognized for its arts and cultural offerings, historic downtowns, farm-to-table dining, outdoor recreation, and the scenic Blue Ridge Parkway and Skyline Drive.



Recreation:

Blue Ridge Parkway, George Washington and Jefferson National Forests, Skyline Drive, Shenandoah National Park, Appalachian Trail, Natural Chimneys Park, South River Greenway, Grand Caverns, and the Blue Ridge Tunnel.

Attractions:

Frontier Culture Museum of Virginia, Woodrow Wilson Presidential Library and Museum, American Shakespeare Center, Heifetz Music Institute, Shenandoah Valley Art Center, R.R. Smith Center for History and Art, Beverley Street Studio School, ShenanArts, Waynesboro Players, Oak Grove Theater, Wayne Theatre, Gypsy Hill Park, and the Russell Museum.

2021 Facts & Figures

Staunton - Augusta County - Waynesboro



Jobs People Region

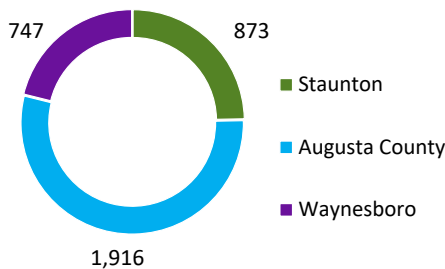
Median Household Income, 2019

Staunton	\$52,611
Augusta County	\$62,711
Waynesboro	\$45,011

Top 3 Employment Sectors

- Health Care & Social Assistance
- Manufacturing
- Retail Trade

Number of Business Establishments: All Industries, 2020



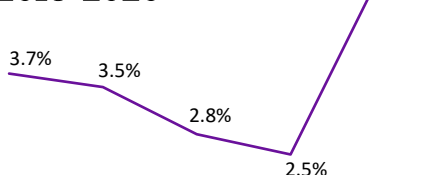
Higher Education

- Mary Baldwin University, including Murphy Deming College of Health Sciences
- Blue Ridge Community College

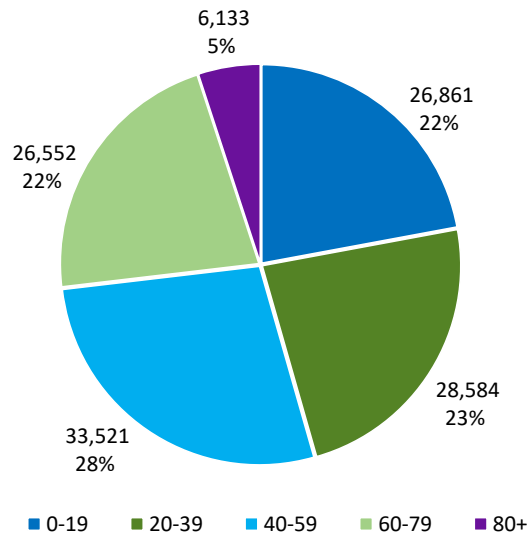
Labor Force, 2020



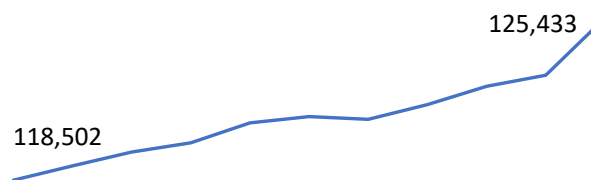
Unemployment Rate, 2016-2020



Age of Population, 2019



Population Growth, 2010-2020



Highest Level Education Attainment, 2019

Locality	High School	Some College/ Associate's	Bachelor's or Higher
Staunton	29.8%	26.5%	33.4%
Augusta County	38.7%	25.9%	22.7%
Waynesboro	33.4%	25.6%	15.7%

Public Schools, 2019-2020

K-12 Student Enrollment	15,893
Total Graduates & Completers	1,141
Percent Continuing Education	55.2%

Median Home Value, 2019

Staunton	\$169,000
Augusta County	\$214,000
Waynesboro	\$174,100

Total Housing Units, 2020

55,174

Number of Households, 2019

49,329

Transportation

- Road: Interstates 81 and 64
- Rail: CSX, Norfolk Southern, Shenandoah Valley Railroad, and Amtrak
- Air: Shenandoah Valley Regional Airport and Eagle's Nest Airport
- Port: Virginia Inland Port (85 miles north)

Augusta Health provides healthcare services

800 miles of River
45 miles of Interstate
1,665 Farms

Local Government

www.ci.staunton.va.us
www.co.augusta.va.us
www.waynesboro.va.us

Central Shenandoah Planning District Commission
www.cspdc.org
(540) 885-5174
Staunton VA 24401



Data Sources:
Weldon Cooper Center, United States Bureau of Labor Statistics, United States Census Bureau, United States Department of Agriculture, Virginia Department of Education, & Virginia Employment Commission.