



The Quarterly Planner

Newsletter of the Central Shenandoah Planning District Commission

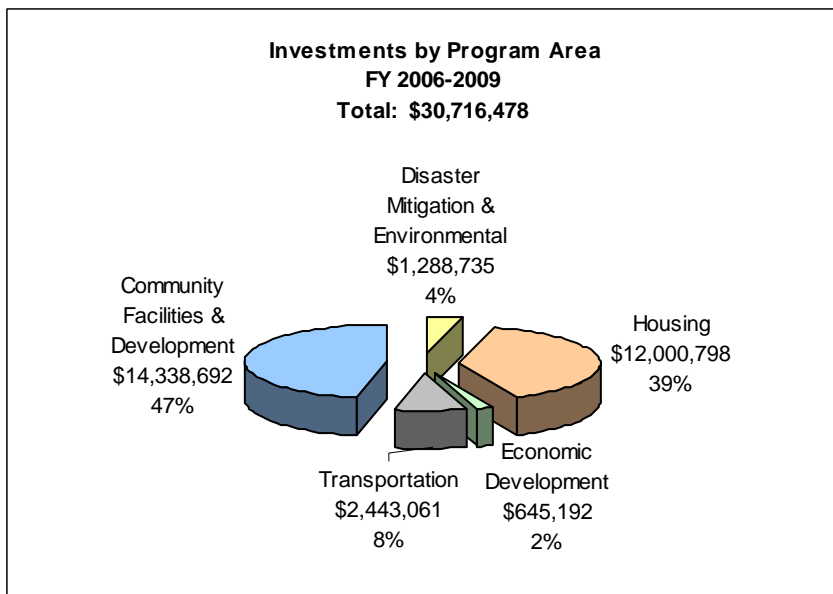
Serving the counties of Augusta, Bath, Highland, Rockbridge and Rockingham, the cities of Buena Vista, Harrisonburg, Lexington, Staunton, and Waynesboro, and the towns of Bridgewater, Broadway, Craigsville, Dayton, Elkton, Glasgow, Goshen, Grottoes, Monterey, Mount Crawford, and Timberville

Commissioners

- David Beyeler — Augusta Co.
- Jeremy Shifflett — Augusta Co.
- Richard Fox — Augusta Co.
- Kay Frye — Augusta Co.
- Kimberly Bullerdick — Augusta Co.
- Carol Hardbarger — Bath Co.
- Larry Tolley — Buena Vista
Executive Committee
- Carolyn Frank — Harrisonburg
- Richard Baugh — Harrisonburg
- Stacy Turner — Harrisonburg
- Jerry Rexrode — Highland Co.
Vice Chairperson
- Frank Friedman — Lexington
Executive Committee
- A. W. Buster Lewis — Rockbridge Co.
Executive Committee
- George Dowrey, III — Rockingham Co.
- Dee Floyd — Rockingham Co.
- William Kyger, Jr. — Rockingham Co.
- William Vaughn — Rockingham Co.
Executive Committee
- Donald Delaughter — Rockingham Co.
- Sharon Angle — Staunton
- Carolyn Dull — Staunton
Executive Committee
- Nancy Dowdy — Waynesboro
Chairperson
- Kristopher Baker — Waynesboro

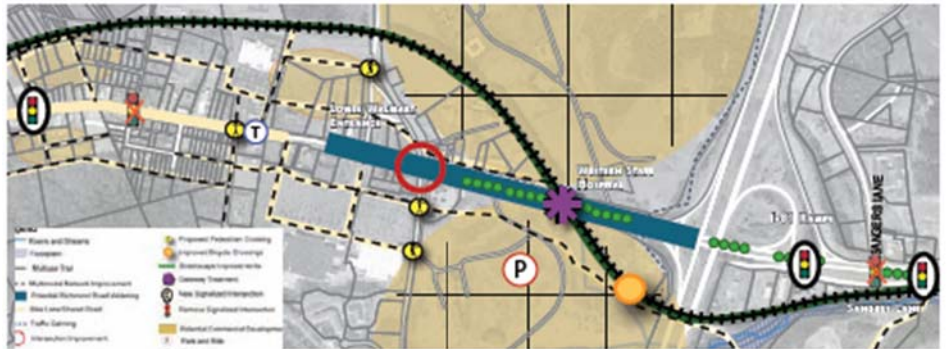
Investments for the District

One of the important services provided by the CSPDC to its member jurisdictions is writing grants and finding ways to bring additional financial resources into the Region. Over the past 40 years, the CSPDC has worked to help find and create investments for a multitude of public projects and programs including economic and community development, flood mitigation, disaster preparedness training, water and sewer projects, water resource planning, transportation planning, affordable housing, recreational facilities and bicycle and pedestrian planning, just to mention a few. Over the past four fiscal years, the CSPDC efforts have paid off in a big way bringing in more than \$30M in new investments to the Region. For every dollar the Commission receives in dues from its ten member jurisdictions, it has leverage approximately \$65 in State and Federal funds for the Region. The chart and figures below represent the most recent results from FY06 through FY09 to which the CSPDC has contributed.



Richmond Road Corridor Study Completed

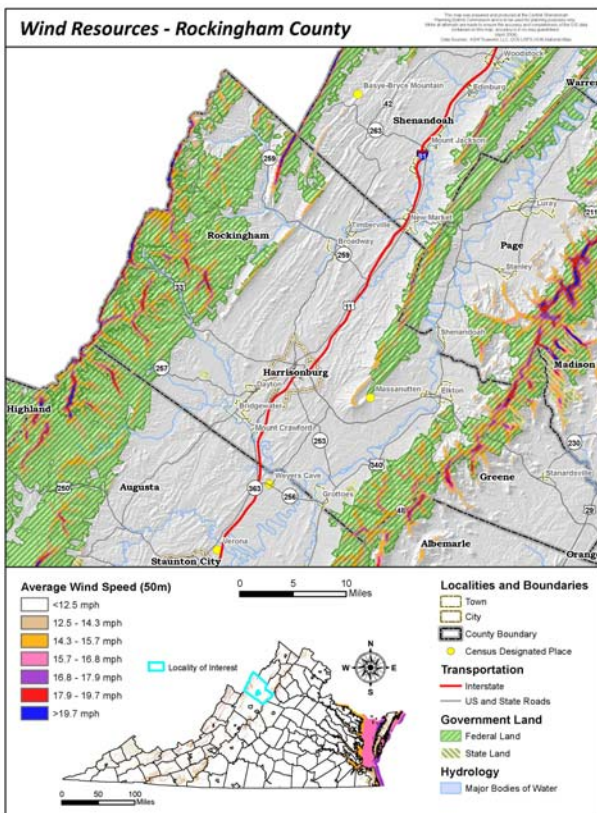
The Richmond Road Corridor Study, a joint planning project with Augusta County and the City of Staunton, was completed this winter after an 18-month transportation planning process. This multimodal corridor plan reflects a long-range 30 year vision for redevelopment of the Richmond Road corridor and is focused on four goals: 1. Foster commercial activity, 2. Support community cohesiveness, 3. Ensure orderly and efficient traffic flow and 4. Enhance the corridor as a gateway into the community. The Richmond Road study proposes transportation improvements for pedestrian/bicycle, automobile and bus traffic from Desper Hollow Road in Augusta County to Greenville Avenue in Staunton. Expanding the local street grid network and bicycle/pedestrian network, developing a rails-with-trails greenway, accommodating expanding roadway capacity improvements, and implementing access management strategies along the corridor are important components of the overall transportation strategy proposed for the Richmond Road corridor. The goal of this transportation strategy for Richmond Road is to establish a framework for encouraging desired development that mitigates corridor congestion while also enhancing community design and place-making attributes throughout the corridor. The final study products of the Richmond Road study can be found on the CSPDC's website at www.cspdc.org.



Staff Contact: Jennifer Hibbert

An Example Map Of Study Recommendations

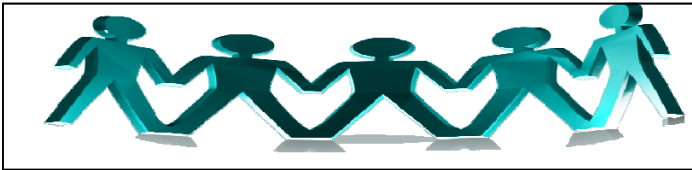
Wind Energy Regulations In Rockingham County



The CSPDC is assisting Rockingham County in the process of developing siting standards for wind energy conversion systems. Assigned the task of developing these regulations, the Wind Energy Workgroup is a diverse group of individuals representing various interests and areas of expertise. The workgroup has held several meetings and visited a wind facility during the development of these local regulations. The Rockingham County Planning Commission and Board of Supervisors are now holding work sessions to hear and discuss the recommendations of the workgroup. The CSPDC GIS Department has created Wind Resource Maps for the counties in the Central Shenandoah Valley, which are available online at http://www.cspdc.org/programs/gis/programs_gis.htm, and can provide assistance to other localities or citizens interested in harnessing wind energy and/or siting wind energy conversion systems.

Staff Contact: Robbie Huff

April 1st Is Census Day - No Fooling!



The U.S. Constitution requires a national census once every 10 years to count every resident in the United States. In March, each household will receive a questionnaire that includes 10 questions. This information has many important uses. Census data helps to determine the allocation of over \$400 billion of federal funding each year for community services such as school lunch programs, job training centers, and the construction of highways and hospitals. It is used to determine the number of seats each state will have in the U.S. House of Representatives, and it determines boundaries for state and local legislative and congressional districts. Businesses use census data to locate supermarkets, new housing, and other facilities. Census 2010 data will be available on the CSPDC Regional Data Center as it is released. For more information about the 2010 Census, go to www.2010census.gov.

Staff Contact: Elizabeth McCarty

Rideshare Program Motors Forward

The CSPDC's new commuter matching service is underway in the Central Shenandoah Valley Region and Central Virginia. The program can also provide members of carpools, people who take public transportation, walk or bike to work a free ride home in an emergency through its Guaranteed Ride Home Program. The Rideshare Program also works with employers to map commuter patterns in their organizations and give information to employees about the benefits of carpooling and how Rideshare works. To sign up for a carpool and for helpful resources for commuters and employers, please visit the Rideshare website, www.rideshareinfo.org. To schedule a Rideshare presentation, contact Rideshare Coordinator, Rebecca Joyce at 540-885-5174 or rebecca@cspdc.org. Rideshare is a joint program of the Central Shenandoah Planning District Commission and the Thomas Jefferson Planning District Commission.



Staff Contact: Rebecca Joyce

Rockbridge Highlights Its Treasures For Parkway's 75th Anniversary



In 2010, the Blue Ridge Parkway will celebrate its 75th anniversary. To celebrate this milestone, the gateway communities of Rockbridge, Buena Vista, Lexington, and Glasgow will develop a geocaching trail which will encourage visitors to explore the Rockbridge region and highlight natural and historically significant spots. Geocaching is an outdoor treasure hunting game in which participants use a Global Positioning System (GPS) or other navigational techniques to hide and seek containers known as "caches". A geocache trail is a series of caches tied together by a common theme. This project is funded through the Appalachian Regional Commission and its Gems of the Appalachia grant program that supports projects that enhance gateway communities of the Blue Ridge Parkway during the Parkway's 75th anniversary celebration. The CSPDC assisted in the development of the project and preparation of the grant application.

Staff Contact: Bonnie Riedesel, Rebecca Joyce

Commission Staff

Bonnie Riedesel
Executive Director

Rebecca Joyce
Senior Planner

Jennifer Hibbert
Transportation Manager

Andrea Terry
Natural Resources Planner

Elizabeth McCarty
Economic Development
Planner

Robbie Huff
GIS Manager

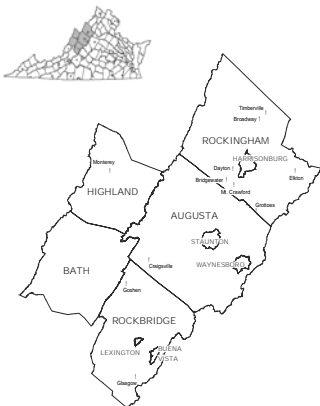
Phil Alexander
GIS Specialist

Rita Whitfield
Administrative Assistant

Kathy Wise
Fiscal Officer

Russell Potter
GIS/Production Specialist

Monica Plecker
Intern



*Central Shenandoah
Planning District*

Meetings and Events

- Feb. 1: CSPDC Commission Meeting (CSPDC)
- Feb. 9: ARRA Broadband Workshop (Blacksburg)
- Feb. 15: Presidents Day
- Feb. 17-18: VAPDC Winter Conference (Richmond)
- Feb. 19: SVP Marketing Committee Meeting (CSPDC)
- Feb. 24: DCR Grant Workshop (Charlottesville)
- Feb. 25: Upper James RC&D Meeting (Covington)
- Feb. 26: Regional Planners Forum (CSPDC)
- March 1-3: ARC Conference (Arlington)
- March 1: RANA Mgmt. Team Meeting (Lexington)
- March 4: HRMPO TAC Meeting (Harrisonburg)
- March 8: Shenandoah RC&D Meeting (Shenandoah County)
- March 9: Shenandoah VOAD Meeting (CSPDC)
- March 10: S-A-W LEPC meeting (Augusta County)
- March 16: Shenandoah Valley Project Impact Meeting (CSPDC)
- March 18: HRMPO Policy Board Meeting (Harrisonburg)
- March 19: SVP Economic Development Forum (Augusta County Govt. Center)
- March 22-24: EDA Annual Conference (Philadelphia)
- March 23: Regional Bike/ Pedestrian Committee Meeting (CSPDC)
- March 29: RideShare Booth at JMU Festival Conference Center
- March 29-30: VAPDC Workshop (Staunton)
- March 31: Community Health Forum (Staunton)



Staff and Commission News



New CSPDC Website Goes Live - The CSPDC's revamped website went live in November. The website features our new logo, expanded information on each of our programs, more mapping and links to resources as well as a new Grants Center with information on state and federal grant opportunities. It still contains our ever-popular Regional Data Center with over 170 economic and demographic measures for the region and its localities.

Planning Commissioner of the Year

Each year since 1985, the Central Shenandoah Planning District Commission has recognized the most outstanding local Planning Commissioner from each of the 21 planning commissions in the region at its Annual Commission meeting. This year that honor went to Mr. Daniel Talbot of Elkton. Mr. Talbot has served on the Elkton Planning Commission since 1998 and currently serves as its Chairman. Mr. Talbot has been instrumental in overseeing the Town's Comprehensive Plan, Zoning Ordinance and development issues facing the Town.



Commission Chair, Nancy Dowdy, presents award to Daniel Talbot.

Central Shenandoah Planning District Commission

112 MacTanly Place
Staunton, Virginia 24401
Phone: 540•885•5174
Fax: 540•885•2687
E-mail: cspdc@cspdc.org
Website: www.cspdc.org