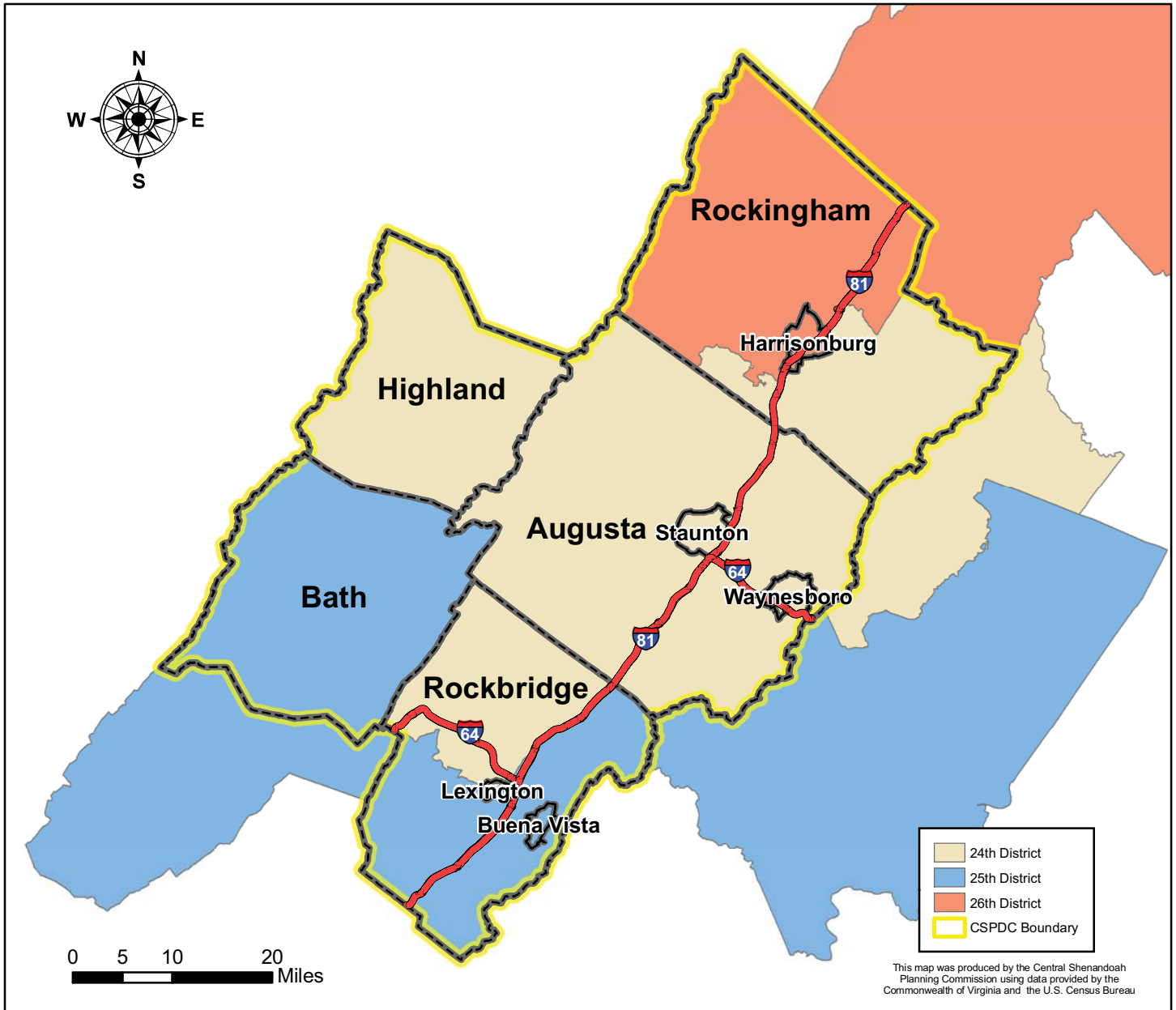





# 2010 Virginia Senate Districts for the Central Shenandoah Planning District Commission



## Virginia Senate Representatives

<p><b>24th District</b>  <b>Senator Emmett W. Hanger, Jr. (R)</b>  <i>District Office</i>            P.O. Box 2            Mount Solon, VA 22843-0002            Phone: (540) 885-6898            Fax: (540) 885-6777</p> <p><i>Capitol Office</i>            P.O. Box 406 (Senate of Virginia)            Richmond, VA 23218            Phone: (804) 698-7524            Fax: (804) 698-7651            Email: <a href="mailto:district24@senate.virginia.gov">district24@senate.virginia.gov</a></p> 	<p><b>25th District</b>  <b>Senator R. Creigh Deeds (D)</b>  <i>District Office</i>            P.O. Box 5462            Charlottesville, VA 22905-5462            Phone: (434) 296-5491            (540) 839-2473            Fax: (434) 296-5949</p> <p>P.O. Drawer D            Hot Springs, VA 24445            Fax: (540) 839-6306</p> <p><i>Capitol Office</i>            P.O. Box 396 (Senate of Virginia)            Richmond, VA 23218            Phone: (804) 698-7525            Fax: (804) 698-7651            Constituent Hotline: (800) 889-0229            Email: <a href="mailto:district25@senate.virginia.gov">district25@senate.virginia.gov</a></p> 	<p><b>26th District</b>  <b>Senator Mark D. Obenshain (R)</b>  <i>District Office</i>            P.O. Box 555            Harrisonburg, VA 22803            Phone: (540) 437-1451            Fax: (540) 437-3101</p> <p><i>Capitol Office</i>            P.O. Box 396 (Senate of Virginia)            Richmond, VA 23218            Phone: (804) 698-7526            Fax: (804) 698-7651            Constituent Hotline: (800) 889-0229            Email: <a href="mailto:district26@senate.virginia.gov">district26@senate.virginia.gov</a></p> 
--	---	---